

Where to stay for the 2019 CSAA conference?

Some considerations as you decide...

Our venue, the Claggett Center near Frederick MD, features a modern conference center with hotel-style accommodations adjacent to the dining and meeting areas. These rooms are in the complex's gracious Christiane Inn; all have private baths and 1 or 2 queen beds. There's an oversize lobby/lounge/socializing area as well as an exercise room on the 1st floor and a common kitchenette with large refrigerator, microwave, iron and ironing board on the 2nd. A nearby Cottage offers more modest dorm-like rooms and semi-private baths (see map below).



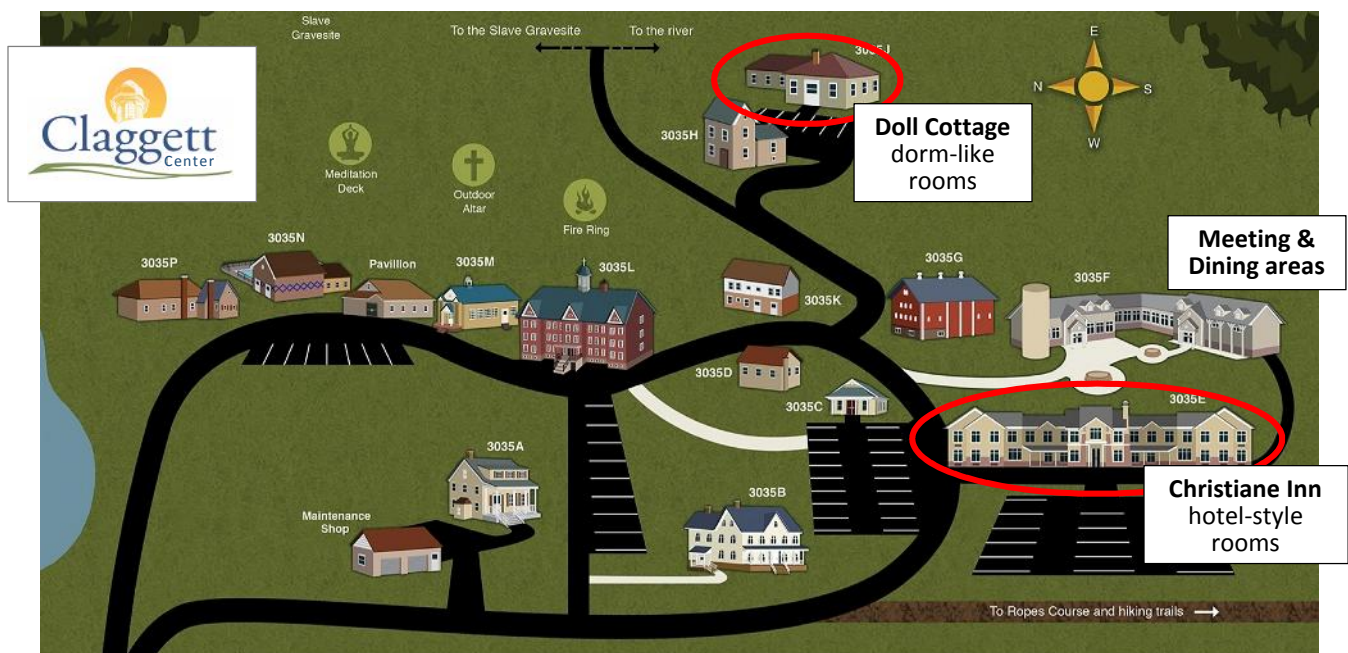
We encourage all conference registrants to stay on-site. This will enhance the collegial feel of the conference and eliminate the need for a daily commute. By choosing to stay right on-site, attendees take advantage of a lower registration fee and avoid the 11% tax on local hotel rooms.

WiFi is available throughout the complex. Porches and lounges offer relaxing, picturesque views. The dining hall is buffet-style with a wide variety of tempting, nourishing foods and vegetarian alternatives. Those staying on-site enjoy breakfast, lunch and dinner Monday and Tuesday (6/17-18) and breakfast Wednesday; if you are staying for the Wednesday schoolhouse site visits, breakfast is included Thursday.



NOTE: As the Claggett Center primarily serves as a faith-based retreat center and summer youth camp facility, *please be advised* that there are no TVs and the Cottage rooms lack individual locks. Bed linens, bath towels, and toiletries (soap and shampoo) included. Please bring an alarm clock and/or hairdryer, if needed.

The range of accommodations and room rates—*overall, less than hotels*—are described in detail on the next page.



Ample parking next to both the Inn and Cottage; scenic nature walking paths throughout the complex.



Christiane Inn

Hotel-style rooms

- Doubles – choose between 1 or 2 queen beds
 - Singles – 1 queen bed
- Each room has its own private bath
- Completely air-conditioned; WiFi throughout
- Dining area and conference meeting rooms immediately adjacent to Christiane Inn



Room rates	3 nights	4 nights
Single room (\$68 per night)	\$204	\$272
Double room - 2 queen beds (\$55 pp/pt)	\$165 pp	\$220 pp
Double room - 1 queen bed (\$49 pp/pt)	\$147 pp	\$196 pp



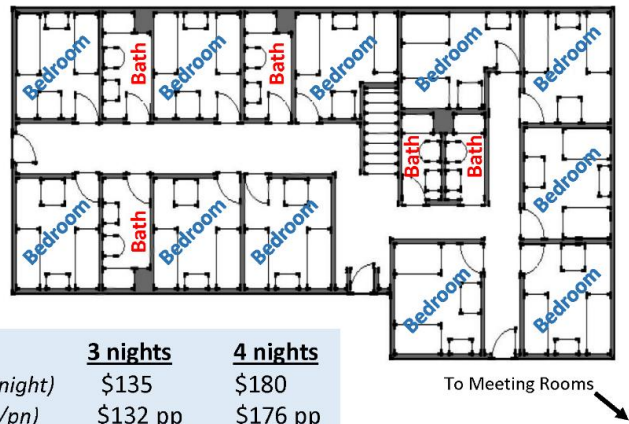
Large lobby/lounge on first floor for relaxing and socializing. **Kitchenette** with refrigerator, microwave, iron and ironing board on second floor. **Exercise room** on 1st floor. 18 rooms with 2 queen beds; 42 with 1 queen bed. Bed linens, bath towels, and toiletries (soap and shampoo) included. Rooms do not have TVs, hairdryers or alarm clocks; please bring your own if needed.



Doll Cottage

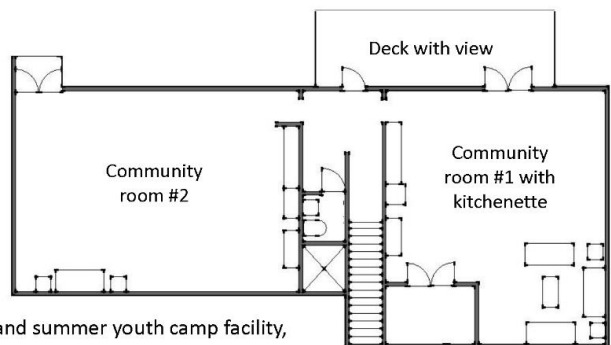
Dorm-like rooms

Singles or doubles - 2 twin beds in each room
Completely air-conditioned; WiFi throughout



11 rooms;
5 semi-private bathrooms

Room rates	3 nights	4 nights
Single room (\$45 per night)	\$135	\$180
Double room (\$44 pp/pt)	\$132 pp	\$176 pp



As the Claggett Center's main function is as a religious retreat center and summer youth camp facility, please be advised that the Cottage rooms lack individual locks. Bed linens, bath towels, and toiletries (soap and shampoo) included. Please bring an alarm clock and/or hairdryer, if needed (a limited number available for loan). Lower level community room has kitchenette (with refrigerator, microwave, coffeemaker, sink, and dishwasher) and a deck with picturesque view.